

A TIMELESS,
BOUTIQUE
OPPORTUNITY.

REIMAGINED.

717 FIFTH
AVE



AN ADDRESS THAT IS ALWAYS IN STYLE.

717 Fifth Ave is perfectly situated in the Plaza District, steps from Central Park and among some of the city's finest retail, restaurants, and corporate neighbors. The building has completed an extensive multi-million dollar renovation featuring new finishes and upgrades.





INTRODUCING THE NEW 717 FIFTH AVE.

- New Lobby with Signage Opportunities
- Large Block with Branding Potential
- Hospitality-Inspired Lobby and Amenity Center
- Pre-Built Program Underway
- Boutique Tower Floors with Unparalleled Central Park Views
- Upgraded Elevator Cabs, Corridors and Restrooms





AN APPROACHABLE PLAZA DISTRICT TOWER.

717 Fifth Ave has it all. Timeless elegance, complimented by an extensive modernization, offers unparalleled value unlike many of the surrounding office buildings. Place your company among the world's best, in a location that projects prestige and quality, in an intimate and boutique setting.



THE PERFECT BALANCE OF BOUTIQUE TOWER FLOORS AND AN EFFICIENT LARGE-BLOCK.

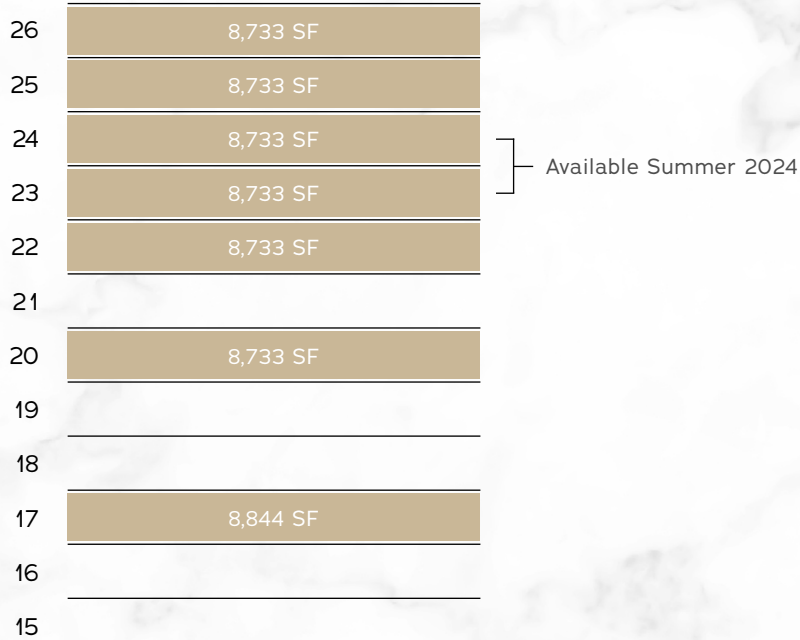
717 Fifth Ave offers three distinct space opportunities.

- Boutique tower floors with Central Park views that offer exclusivity and company branding
- Smaller suites in the mid-rise featuring a pre-built program
- A 95,112 SF large base floor block opportunity offering the potential for dedicated lobby desk and signage

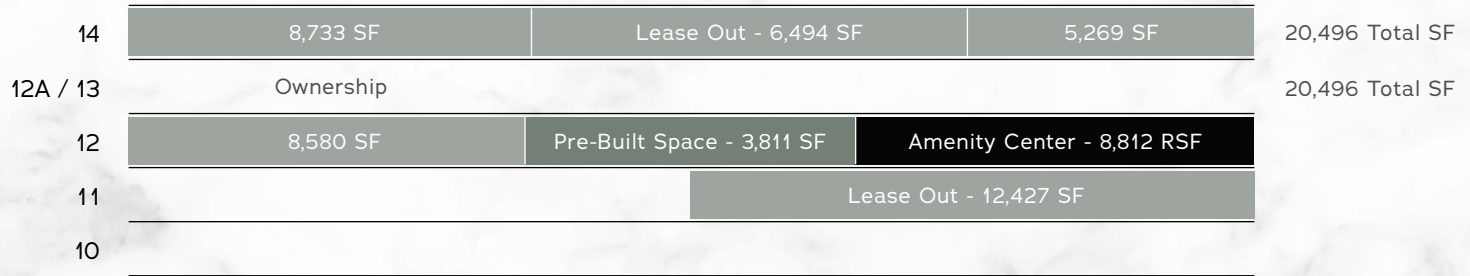
All complimented by a brand new amenity center on the 12th floor featuring tenant lounge, conference center, food and beverage offering, lockers and showers

View from tower floor.

TOWER FLOORS



MID-RISE



LOW-RISE







INTERIORS THAT MAKE A LASTING IMPRESSION.

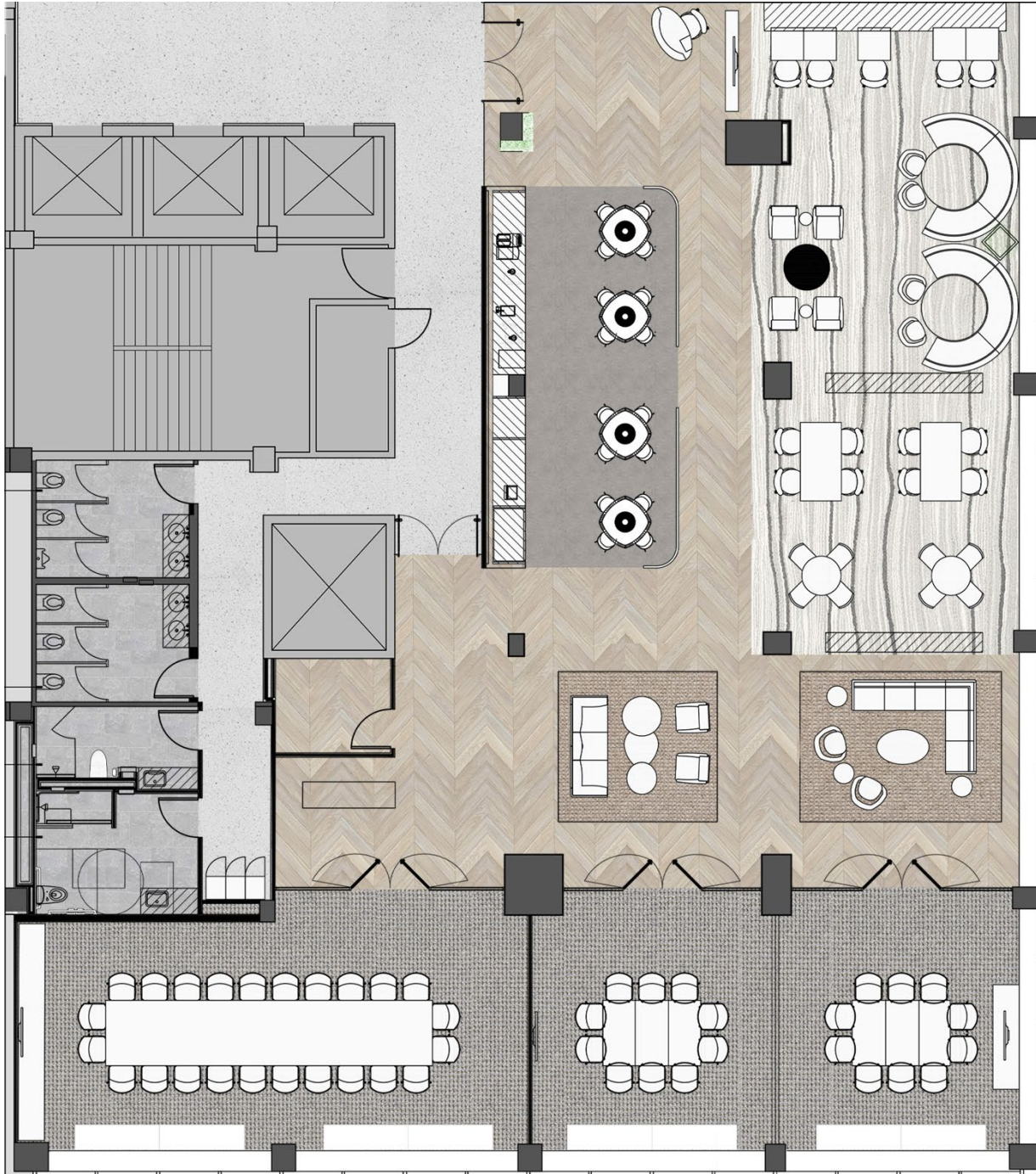
Feel the elegance of 717 fifth Ave throughout. Tenants and guests are welcomed through a newly imagined lobby—designed by internationally renowned architectural firm Pei Cobb—paired with thoughtfully-crafted enhancements and spaces throughout the entire building.

A robust amenity space has been designed by interior architects MKDA, to infuse creativity, well-being and a hospitality-inspired retreat to your company's workday.





EXCLUSIVE AMENITY LOUNGE & CONFERENCE CENTER.







MAKE CENTRAL PARK YOUR BACKYARD.

717 Fifth Ave's unbeatable location places your company just three blocks from Central Park. Turn lunch breaks into moments of relaxation and enjoy the fresh air and scenery.



IN THE CENTER OF ELEGANCE.

● RETAIL

Apple
 Bergdorf
 Goodman
 Burberry
 Chanel
 COACH
 Dior
 Louis Vuitton
 Tiffany & Co.

● RESTAURANTS

Aquavit
 BG
 Il Mulino
 Il Tinello
 Marea
 Nerai
 Nobu Fifty Seven
 Sarabeth's
 Serafina Osteria
 Tao Uptown

● HOTELS

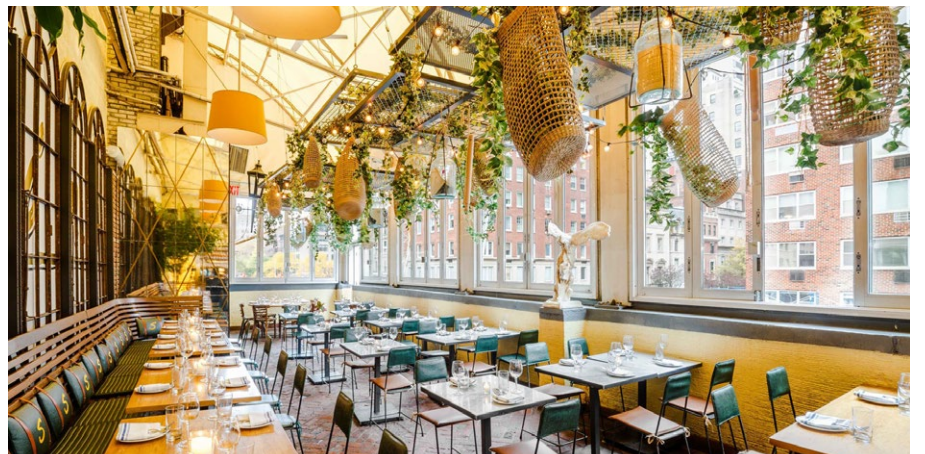
Four Seasons *(Temporarily Closed)*
 Loews Regency
 Pierre
 The Plaza
 Ritz-Carlton
 St. Regis
 Whitby

● ARTS & CULTURE

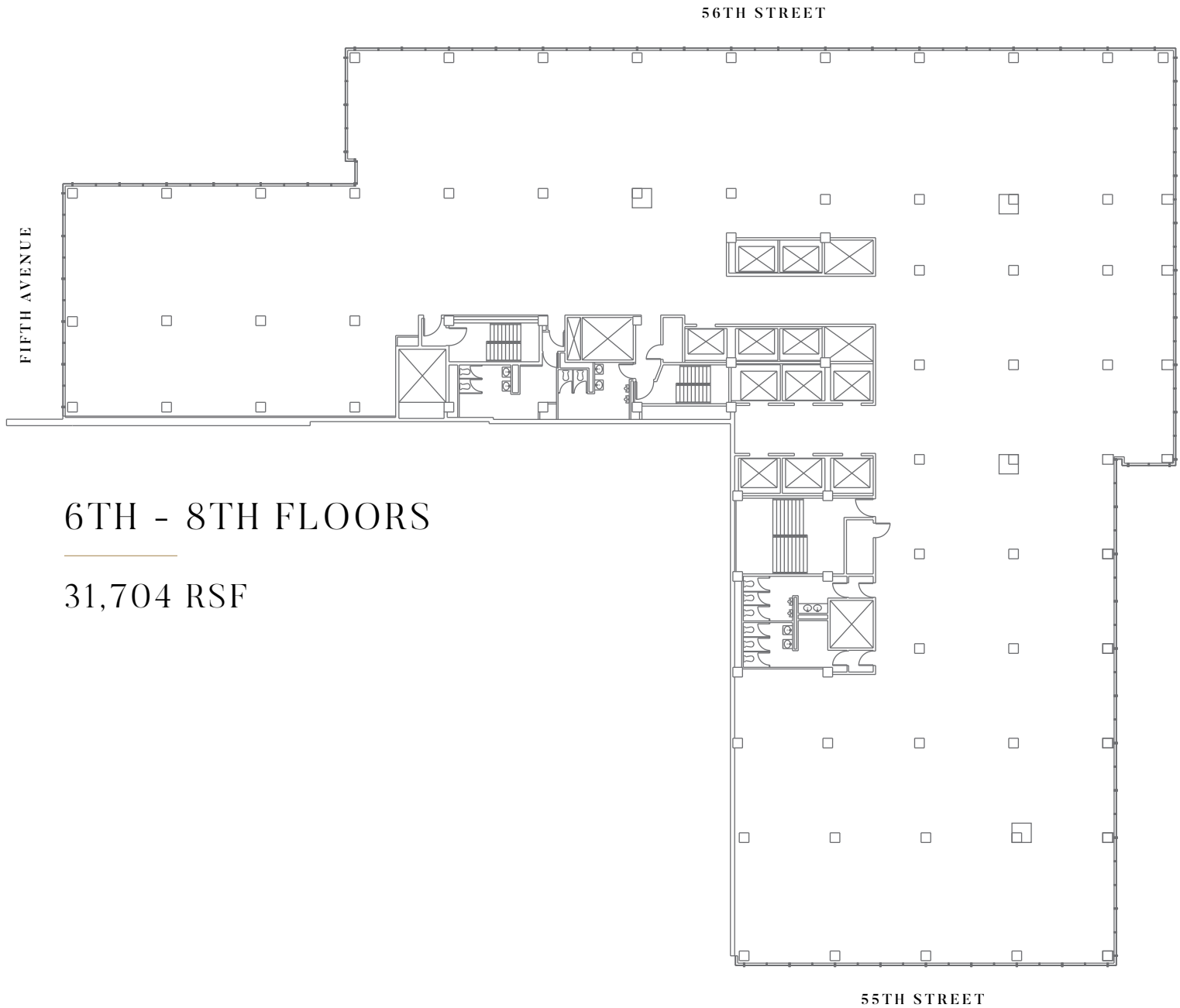
Carnegie Hall
 MoMA
 Museum of Arts and Design

 CITI BIKE LOCATIONS

 TRANSIT



LOW-RISE



6TH - 8TH FLOORS

31,704 RSF



MID-RISE

56TH STREET



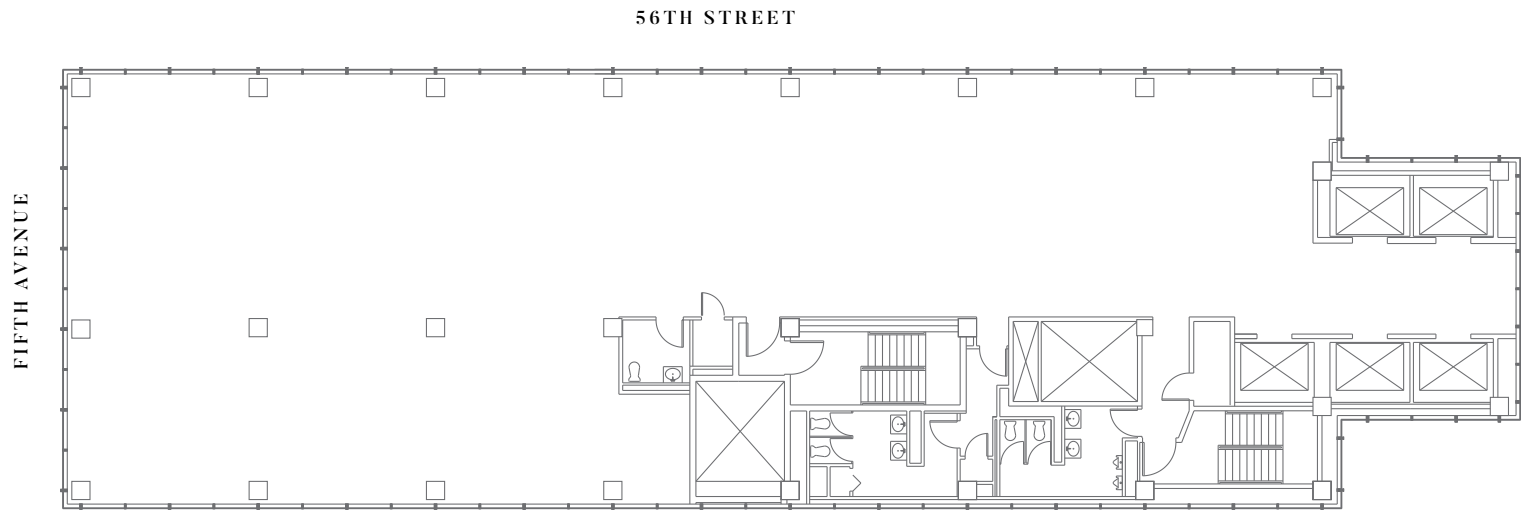
9TH - 14TH FLOORS

20,675 RSF

55TH STREET



TOWER FLOORS



15TH - 26TH FLOORS

8,733 RSF



BUILDING ENHANCEMENTS & OWNERSHIP

- A full lobby renovation, designed by Pei Cobb Freed & Partners.
- A first-class ~8,000 SF amenity center, which will include a tenant only conference center, lounge/collaborative areas, grab and go food service and locker rooms with showers.
- Planned renovation of the common corridors and restrooms on multi-tenant floors.
- Renovation of elevator interiors and modernization of controls with destination dispatch.
- High-end, fully scalable prebuilt office program.
- New low profile and efficient convectors within newly built space expanding the window line significantly.
- On-site property management and ownership.

717

**FIFTH
AVE**

DAVID HOLLANDER

212-984-6553

david.hollander@cbre.com

NICK HILTON

212-984-7191

nick.hilton@cbre.com

MAXWELL TARTER

212-984-8274

maxwell.tarter@cbre.com

CBRE